



BAY OF ISLANDS SAILING WEEK

20th
ANNIVERSARY



2023 SAILING
INSTRUCTIONS

24th - 27th January 2023

Beach Party!
THURSDAY NIGHT

USEFUL CONTACTS

RACE ORGANISATION

Race Office	027 421 5219	VHF Channel 16
Outer Course (A, B, M)		VHF Channel 77
Middle Course (C, E, SB and Y88 Divisions).....		VHF Channel 73
Island Racing Divisions		VHF Channel 17
Principal Race Officer	027 494 7531	

YACHT SERVICES

Russell Radio:	09 403 7218	VHF Channel 63
forecasts at	0800, 0930, 1330, 1750 hrs	
Coastguard nowcast		VHF Channel 19
Opua Marina	09 402 7124	
North Sails	van at marina each evening or	09 402 5636
Bay of Islands Boatyard (has travel lift).....		09 402 7124
Northland Spars and Rigging	09 402 6280 or 0273 322 381	
JB Marine (marine engineering and electrical).....		09 402 8375
Seapower (marine engineering and electrical).....	09 402 8820 or 0276 011 492	
Burnsco Opua		09 402 5204
Opua Store (lunches).....		09 402 7575

OTHER SUPPORT

Emergency		111
Russell Police	09 403 9090	
Paihia Police	09 402 7130	
Russell Medical Centre	09 403 7690	
Bayview Medical Centre, Paihia	09 402 7132	
Paihia Medical Services	09 402 8407	
Paihia Dental Surgery	09 402 7714	
Northland Regional Council, Opua	09 402 7516	
NRC Environmental Emergency Hotline.....	0800 504 639	
Department of Conservation	09 407 0300, a/h 0800 362 468	
Bay of Islands Visitor Information Centre.....	09 402 7345	
Russell Booking & Information Centre.....	0800 633 255	

www.bayofislandssailingweek.org.nz



WELCOME

It is great to celebrate the twentieth year of this event in the beautiful Bay of Islands. This year we will welcome over 100 boats and their crews. This regatta is well known all over New Zealand and captures a 'week' of great sailing, fun and friendships.

As well as working hard to make this event be more sustainable and have less impact on our environment the committee has been working alongside the Department of Conservation (DOC). This has mainly been around changes we have had to make due to the new marine mammal sanctuary that we will sail through. We now have a permit to proceed with the event and we know there will be DOC observers on courses.

This event can not be planned and run without a huge number of volunteers and willing hands. I would like to most sincerely thank everyone who has worked on this event.

This year we have had some new committee members who have taken new roles on, thank you. Special mention must go to Nina and Tony Kiff who have been the mainstay of this event for a number of years, as they step down from the committee. The Kiff's efforts and hard work was formally acknowledged as they were recipients of a Yachting New Zealand award at the 2022 ceremony. It is great that they are still in the background at this event.

It just leaves me to say welcome to this great event, celebrating all that is good in the sailing world. Have fun, sail well, keep safe and enjoy yourselves.

Ian Clouston

CONTENTS

Contact Information	2
Welcome	3
Sailing Instructions: All divisions	4
Bay of Islands Map and Mark Information	11
A, B, M - Windward / Leeward Courses	12
C, E, Sports Boat, Young 88 - Windward / Leeward Courses	13
A, B, M, C, E, Sports Boat, Young 88 - Bay Courses	14
Island Racing Division Courses	17
Addendum U - Umpired Fleet Racing Rules.....	19
Safety Information	21

NorthlandInc

Growing Northland's Economy

Kia tupu ai te ōhanga o Te Tai Tokerau

BAY OF ISLANDS SAILING WEEK 2023

Opua Cruising Club, Opua, Bay of Islands, New Zealand.

24th to 27th January 2023

The organising authority is the Bay of Islands Sailing Week Inc. in conjunction with the Bay of Islands Yacht Club Inc, Kerikeri Cruising Club Inc, Opua Cruising Club Inc and the Russell Boating Club Inc.

SAILING INSTRUCTIONS

The notation '[NP]' in a rule means that a boat may not protest another boat for breaking that rule. This changes RRS 60.1(a). The notation '[DP]' in a rule denotes a rule for which the penalty is at the discretion of the Protest Committee.

1. RULES

- 1.1 The regatta will be governed by the "Rules" as defined in the "Racing Rules of Sailing".
- 1.2 The Yachting New Zealand Safety Regulations, Part 2, Category 4, will apply to all keelboats, multihulls racing in A,B,C,E,M and Young 88 Divisions and the Island Racing Divisions, except where instructions 1.3 or 1.4 apply.
- 1.3 For Etchells and Pied Piper Classes their class rules will apply.
- 1.4 The Yachting New Zealand Safety Regulations, Part V, Category 2 will apply to all trailer yachts racing in A,B,C, E Divisions and Island Racing Division.
- 1.5 The Yachting New Zealand Safety Regulations Appendix VII, Sport Multihull Yachts will apply to Sport Multihull Yachts.
- 1.6 The Yachting New Zealand Safety Regulations Part VI will apply to Sport Boats.
- 1.7 The Young 88 Class Rules will apply.
- 1.8 The Yachting New Zealand "Rules – Performance Handicap Racing Fleet (PHRF)" will apply to all boats racing under PHRF.
- 1.9 Sails carried for any one day shall remain on board for all races sailed that day. The sails carried on any other day need not be the same as those carried on any previous day of the regatta.
- 1.10 Boats racing in the **Island Racing E (Non Spinnaker)** division shall not use a spinnaker or gennaker while racing.

Boats may only use headsails that are carried on a load bearing stay.
- 1.11 For the **Island Racing Division**, RRS Rule 52, Manual Power will not apply.
- 1.12 For all other divisions, except if restricted under SI

1.10 or 1.11 RRS Rule 52, Manual Power, will not apply.

- 1.13 RRS Rule 47 is amended by adding the following sentence: "*For the avoidance of doubt the discarding of elastic or wool bands when setting a sail is not permitted*".
- 1.14 Crew on board for any one day shall remain on board for all races that day unless the Race Officer for the relevant course agrees otherwise because of injury and such like. Crew on board on any other day need not be the same crew as the previous days of the regatta.
- 1.15 For Divisions A, B, C, E, M, Sport Boats and Young 88 fleets, Appendix UF will apply to all races. See Addendum A for wording.
- 1.16 Appendix T, Arbitration will apply.
- 1.17 Members of the Protest Panel will normally observe the racing. If a Protest Panel member witnesses what he or she believes to be an infringement of a Rule of Part 2, Rule 42, or Rule 31, this may be signaled with one long sound signal from a Judge boat.

2. CHANGES to SAILING INSTRUCTIONS

Any change to the Sailing Instructions will be posted before 0830hrs on the day that it will take effect, and any changes to the schedule of races will be posted by 1900hrs on the day before it will take effect.

3. COMMUNICATION WITH COMPETITORS

- 3.1 Notices to competitors will be posted on the "BOISW APP, (download from APP store and Play Store)" as well as the official notice board located in the Marquee next to the Opua Cruising Club.
- 3.2 The race office is located next to the Opua Cruising Club.
- 3.3 Race information will be broadcast by the race committee on:
Divisions A, B, M - Channel 77
Divisions C, E, Sport Boat & Young 88 - Channel 73
Island Racing - Channel 17
At their discretion, the committee may answer radio queries relating to courses, time and racing. This modifies RRS 41.



**Proudly supporting
Kiwi Sailors
to achieve
their dreams**

nzlsailingfoundation.nz

4. SIGNALS MADE ASHORE

Signals made ashore will be displayed on the flagpole attached to the Race Office.

5. SCHEDULE OF RACES

5.1 No practice race is scheduled.

5.2 A, B, C, E, M, SB, & Y88 Divisions:

Date	1 st Warning Signal	Races to be Sailed
Wednesday 25th January 2023	1025hrs	Up to 2 Windward/Leeward and 1 Bay Race.
Thursday 26th January 2023	1025hrs	Up to 3 Windward/Leeward Races or 2 Windward/Leeward Races and 1 Bay Race.
Friday 27 th January 2023	1025hrs	Up to 2 Windward/Leeward and 1 Bay Race.

5.3 Island Racing Division:

Date	1 st warning Signal	Races to be Sailed.
Wednesday 25th January 2023	1025hrs	1 Bay Race
Thursday 26th January 2023	1025hrs	1 Bay Race
Friday 27 th January 2023	1025hrs	1 Bay Race

5.4 No Warning Signal will be made after 1530hrs on Friday 27th January 2023.

6. DIVISION FLAGS

6.1 OUTER COURSE (A, B and M Divisions)

A Division Lime Green
B Division Mid Blue
M Division White

6.2 INNER COURSE (C, E, Sport Boat and Young 88 Divisions)

C Division Pink
E Division Black
Sport Boat Yellow
Young 88 White

6.3 ISLAND RACING

Island Racing A Black
Island Racing B Yellow
Island Racing C Pink
Island Racing D Mid Blue
Island Racing E (Non Spin) Lime Green
Island Racing F (Multihull) White

6.4 [NP]Boats while racing shall fly their division flag either on the backstay or the aft starboard shroud.

7. RACING AREAS

7.1 Three race areas with separate race management will be used. All race areas are in the Bay of Islands, Chart NZ5125.

7.2 A,B,C,E,M, SB, Y88 DIVISIONS:

(a) Divisions A, B and M will use the outer course.
(b) Divisions C, E, Sport Boats and Young 88 will use the inner course.

7.3 Island Racing Divisions:

The racing area will be the Bay of Islands, Chart NZ 5125

8. THE COURSES:

8.1 Pages 12 to 14 of these Sailing Instructions, the courses, including the order in which the marks are to be rounded, and the side on which side each mark is to be left. Note: *The pages are marked with which divisions the course shown applies to.*

8.2 Windward/Leeward races – no later than the warning signal the course number and the approximate compass bearing of the first leg will be displayed on the committee signal vessel.

8.3 Bay Races: no later than the warning signal, the number of the course to be sailed will be displayed on the race committee signal vessel.

8.4 All Bay Races for Divisions A, B, M, C, E, Sport Boat and Young 88 may include a windward buoy. This will be laid approximately one (1) nautical mile to windward of the start line. It will be rounded to port or starboard as signed by the committee signal vessel.

Red board: Windward buoy to be rounded to port.

Green board: Windward buoy to be rounded to starboard.

Island Racing Divisions:

8.6 Pages 12-17 of these Sailing Instructions state the courses, including the order in which marks are to be rounded, the side on which the mark is to be left.

8.7 No later than the warning signal, the number of the course to be sailed will be displayed on the race committee signal vessel.

9. MARKS

9.1 OUTER AND INNER COURSES: (A, B, C, E, M Sport Boat, and Young 88 Divisions.)

The course marks are described on pages 10, 11 of the Sailing Instructions.

9.2 ISLAND RACING DIVISION:

The course marks are described on page 10-11 of the Sailing Instructions.

- 9.3 There is no windward mark for the Island Racing course.

10. THE START

- 10.1 The starting line for all races will be between a red and white staff displaying an orange flag on the race committee signal vessel at the starboard end and the port-end starting mark.

- 10.2 **[DP][NP] Boats whose warning signal has not been made shall avoid the starting area.**

- 10.3 A boat starting later than (four) 4 minutes after her starting signal will be scored Did Not Start. This changes RRS rules A5.1 and A5.2

- 10.4 Individual Recall: In addition to RRS rule 29.1, the race committee may call yachts on the designated course VHF channel.

- 10.5 General Recall: Following a General Recall the new start will be five (5) minutes after the recalled start. One minute after the recalled start the First Substitute will be lowered, the division flag(s) or the division(s) to be restarted will be re-hoisted along with the Preparatory Signal. This changes RRS rule 29.2 and Race Signal "First Substitute". Following a General Recall the start(s) for the following division(s) will be delayed accordingly. In addition to RRS rule 29.2, the race committee may call yachts on the designated course VHF channel.

11. CHANGE OF THE NEXT LEG OF THE COURSE.

A, B, C, E, M, Sport Boat, and Young 88 Divisions

- 11.1 Change of Course – Bay Race – RRS rule 33 is replaced by the following:

If the race committee signals a change of course (signals Flag C with repetitive sounds) as the boats approach a mark, after rounding that mark, boats shall sail directly to the finish.

ISLAND RACING DIVISION:

- 11.2 Change of Course – RRS rule 33 is replaced by the following: If the race committee signals a change of course (displays Flag C with repetitive sounds) as the boats approach a mark, after rounding that mark, boats shall sail directly to the finish.

12. THE FINISH

OUTER AND INNER COURSES: (A, B, C, E, M, Sport Boat and Young 88 Divisions)

- 12.1 For the Windward/Leeward races, the finish line will be on the opposite side of the race committee signal

vessel to the start line, between a red and white staff displaying a blue flag on the race committee signal vessel and the course side of the port end finish mark.

- 12.2 For the Bay Races, the finish line will be between a red and white staff displaying a blue flag on the race committee signal vessel (S) and the finishing mark. The signal vessel is to be left to Starboard and the finishing mark to Port. The committee vessel on station at the finish may not be the same as that at the start of the race.

ISLAND RACING DIVISION:

- 12.3 The finishing line will be between a red and white staff displaying a blue flag on the race committee signal vessel and the Luxury Real-Estate buoy. When finishing the committee vessel is to be left to port and the Luxury Real-Estate Buoy to starboard. The committee vessel on station at the finish may not be the same as that at the start of the race.

13. PENALTY SYSTEMS

- 13.1 RRS rule 44 is amended so that the Two-Turns Penalty is replaced by the One-Turn Penalty.
- 13.2 Also see Appendix UF for umpire penalties.
- 13.3 A boat that has taken a penalty or retired under RRS rule 31 or RRs rule 44.1 shall complete an acknowledgement form at the Race Office within the protest time limit.
- 13.4 RRS rule 44.1 is changed to permit a boat that has broken a rule of RRS part 2 or RRS 31 to take a penalty after racing but prior to any protest hearing. Her penalty will be a 30% Scoring Penalty calculated as stated in rule 44.3(c).

14. TIME LIMITS AND TARGET TIMES

A, B, C, E, M, Sport Boat and Young 88 Divisions

- 14.1 The time limits and target times for the first boat in each division are given in The Table below. Failure to meet the target time will not be grounds for redress. This changes RRS rule 62.1(a).

RACE	TIME LIMIT	TARGET TIME	FINISH WINDOW
Windward/Leeward	90 minutes	60 minutes	15 minutes
Bay Race	3.5 hours	3 hours	90 minutes

- 14.2 Boats failing to finish within the Finish Window after the first boat sails the course and finishes will be scored Did Not Finish without a hearing. This changes RRS 35, A5.1 and A5.2

ISLAND RACING DIVISION:

RACE	TIME LIMIT
BAY RACE	SIX (6) HOURS

14.3 Boats still racing after the race time limit (6 hours) expires will be scored points equal to the last finisher for that division plus 1.5 points. Where more than one (1) boat is still racing after the time limit, they will be scored the same score. Any boat who retires from the race will be scored DNF. This changes RRS 35 and A5.

15. HEARING REQUESTS

15.1 Immediately after finishing a boat intending to protest shall, in addition to the requirements of RRS 61.1(a), inform the committee vessel at the finishing line of her intention to protest and the identity of the boats protested against. The protesting boat must receive an acknowledgement from the race committee. This changes RRS 61.

15.2 Protest forms are available at the Race Office. Protests shall be delivered there within the protest time limit. Parties lodging protests must be present in the vicinity of the race office from the time limit until their protest is heard.

15.3 For each division, the protest time limit is 90 minutes after the last boat in its division has finished the last race of the day or the race committee signals no more racing today, whichever is later. The same protest time limit applies to all protests by the race and protest committees about incidents they observed in the racing area. This replaces RRS 61.3

15.4 Notices will be posted in the no later than 30 minutes after the protest time limit to inform competitors of hearings in which they are parties or named as witnesses.

15.5 Notices of protest by the race or protest committees will be posted on the notice board in the Marquee to inform boats under RRS 61.1(b).

15.6 Rating protests must be lodged by the end of protest time on Wednesday 25th January 2023.

15.7 On the last scheduled day of racing a request for redress based on a protest committee decision shall be delivered

(a) within the protest time limit if the requesting party was informed of the decision on the previous day;

(b) no later than 30 minutes after the party was informed of the decision on that day. This changes RRS 62.2.

15.8 Also see Appendix UF for umpire penalties.

16. SCORING

16.1 For Divisions A,B,C,E,M,Sport Boat and Young 88 one (1) race is required to constitute a series.

16.2 Appendix A will apply to all divisions except for Island Racing.

All races will count for all Island Racing Divisions.

16.3 Positions will be calculated using PHRF (current inshore) and General Handicap, unless paragraphs 16.5, 16.6 apply.

16.4 Elapsed time positions will be calculated for the A, M and Young 88 divisions.

16.5 No alteration in a boat's PHRF TCF will be permitted after 1800hrs on 24th January 2023, except as a result of a rating or handicap protest, or to correct rating or handicap office errors. 16.6 General Handicap may be adjusted for each race.

16.7 The scoring abbreviation for a discretionary penalty given under instruction 15.6 will be DPI.

16.8 PHRF positions for a division will only be calculated if there are three (3) or more boats in that division race under PHRF.

16.9 ISLAND RACING DIVISION

16.10 The scoring abbreviation for points awarded to a boat finishing outside her time limit under sailing instruction 14 will be BTL.

17. [DP][NP] SAFETY REGULATIONS

17.1 A boat that retires from a race shall notify the race committee as soon as possible.

17.2 Any boat or equipment may be inspected at any time for compliance with safety requirements, rating certificates and/or sailing instructions.

17.3 No later than the close of the protest time limit applying to the division that the boat is sailing in, the race committee will report any breaches of the safety standards to the protest committee requesting action on the report. If a breach of the safety standards is upheld the protest committee will impose a 5% time penalty applied to each race completed that day or such other penalty as is appropriate given the seriousness of the offence. Any time penalty will be calculated on elapsed time. This amends RRS 60.2.

18. [DP] EVENT ADVERTISING

Forestay battle flags may be provided by the organising authority. If forestay battle flags are provided they must be displayed from registration until one (1) hour before the racing commences the

next day; then from cessation of racing for the day until one (1) hour before racing commences the next day or; on Friday, until 0900hrs on Saturday 28th January 2023.

Protests over the failure to display sponsor's bow decals or forestay flags can only be lodged by the race committee.

19 PRIZES

19.1 Trophies will be awarded as follows:

1. General Handicap: Trophies will be awarded for first, second and third in the series on General handicap in each division, except for Young 88 where there will only be a general handicap trophy for first.
2. PHRF. South Pacific PHRF Championship trophies will be awarded for first, second and third on PHRF handicap for any A, B, C or E divisions that have three (3) or more boats in that division race under PHRF.
3. Line. Trophies will be awarded for first, second and third in a series on line in the Young 88 division; and for first in the series on line in A,B,C,E,SB and M divisions.
4. Island Racing. Prizes will be given for first, second and third in each fleet on general handicap and, if there are three (3) or more boats in the division racing under PHRF, on PHRF.
5. In addition there may be spot prizes.

20. [DP][NP] MEDIA

Additional Persons

With the prior approval of the Race Committee, a boat may carry additional persons on board from the Preparatory Signal until 1 hour after the Starting Signal for media purposes. Such person, shall not participate in the sailing of the boat. Such action will not form the basis of a protest or constitute grounds for redress (amends RRS 47.2 and 62.1).

21. INSURANCE

It is recommended that every participating boat shall be insured with a valid third-party liability insurance with a minimum cover of \$5,000,000 per incident or the equivalent.

22. DISCLAIMER OF LIABILITY

22.1 RRS 3 of the Racing Rules of Sailing States: "The responsibility for a boat's decision to participate in a race or continue racing is hers alone".

Sailing is by its nature an unpredictable sport and therefore inherently involves an element of risk.

By taking part in a event, each competitor agrees and acknowledges that:

- a) They are aware of the inherent element of risk involved in the sport and accept responsibility for the exposure of themselves, their crew, and their boat to such inherent risk whilst taking part in the event;
- b) They are responsible for the safety of themselves, their crew, their boat and their other property whether afloat or ashore;
- c) They accept responsibility for any injury, damage or loss to the extent caused by their own actions or omission;
- d) Their boat is in good order, equipped to sail in the event and they are fit to participate;
- e) The provision of a race management team, patrol vessels and other officials and volunteers by the event organiser does not relieve them of their own responsibilities;
- f) The provision of patrol vessel cover is limited to such assistance, particularly in extreme weather conditions, as can be practically provided in the circumstances;
- g) It is their responsibility to familiarise themselves with any risks specific to this venue or this event drawn to their attention in any rules and information produced for this event and to attend any safety meetings held for this event.

22.2 RPAS (Remote Piloted Aircraft Systems) will be used during the event. Participation in the regatta will be taken as agreement and consent to be flown over and have the RPAS operate within close proximity to competing boats. The RPAS Operators employed by the Organising Authority are Civil Aviation Authority Certified Operators and the RSAP are operated within Civil Aviation Authority Rule 102. The Organising Authority does not accept any liability for actual or perceived interference from any RPAS taking photographs during racing.

BUILT TO PERFORM

northsails.com



BAY OF ISLANDS SAILING WEEK BEACH PARTY

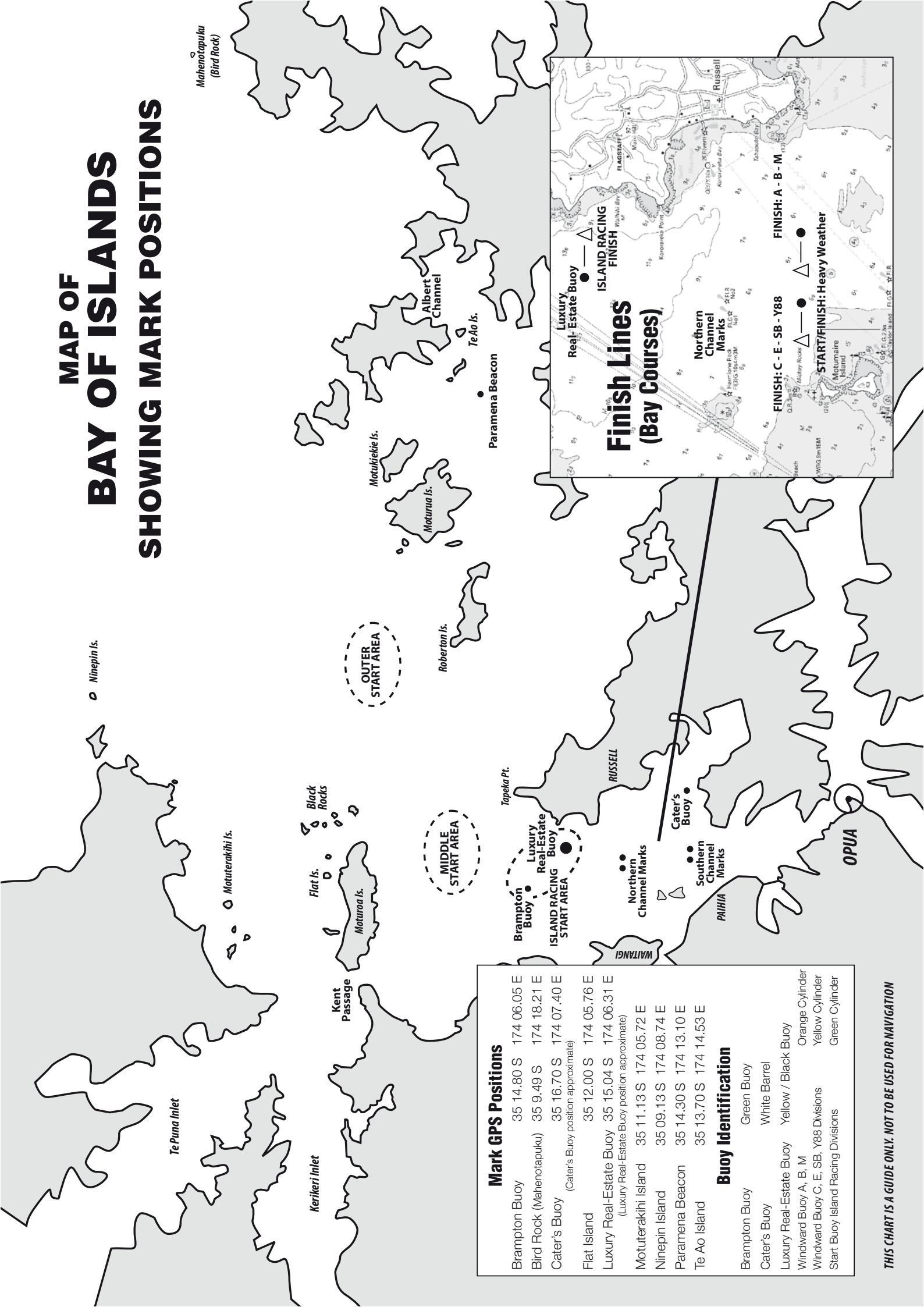
THURSDAY 26TH JANUARY 2023

Ferry Tickets \$25pp | Departing Opuia, Paihia & Russell
Entry from 6pm | Live music from Penny Royal Tea

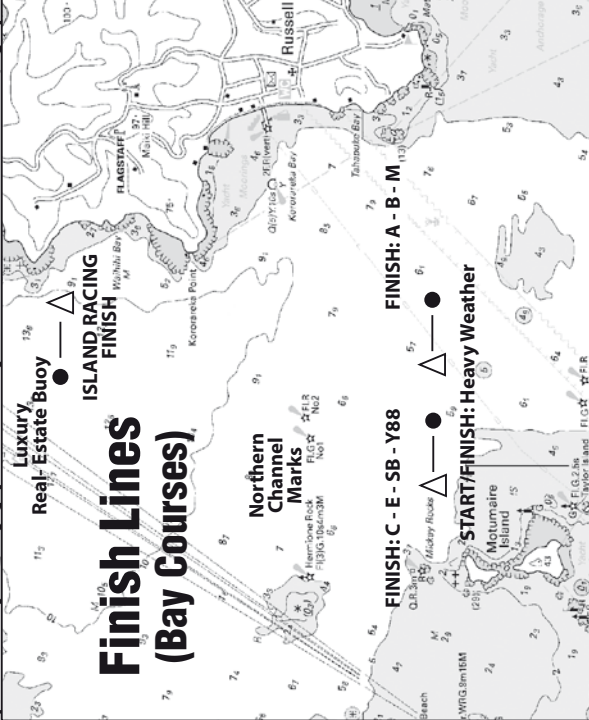
BOOK NOW! 0800 365 744 | exploregroup.co.nz



MAP OF BAY OF ISLANDS SHOWING MARK POSITIONS



Mark GPS Positions		
Brampton Buoy	35 14.80 S	174 06.05 E
Bird Rock (Mahenotapuku)	35 9.49 S	174 18.21 E
Cater's Buoy	35 16.70 S	174 07.40 E
(Cater's Buoy position approximate)		
Flat Island	35 12.00 S	174 05.76 E
Luxury Real-Estate Buoy	35 15.04 S	174 06.31 E
(Luxury Real-Estate Buoy position approximate)		
Motuterakihī Island	35 11.13 S	174 05.72 E
Ninepin Island	35 09.13 S	174 08.74 E
Paramena Beacon	35 14.30 S	174 13.10 E
Te Ao Island	35 13.70 S	174 14.53 E
Buoy Identification		
Brampton Buoy	Green Buoy	
Cater's Buoy	White Barrel	
Luxury Real-Estate Buoy	Yellow / Black Buoy	
Windward Buoy A, B, M	Orange Cylinder	
Windward Buoy C, E, SB, Y88 Divisions	Yellow Cylinder	
Start Buoy Island Racing Divisions	Green Cylinder	



THIS CHART IS A GUIDE ONLY. NOT TO BE USED FOR NAVIGATION

WINDWARD / LEEWARD COURSES

A, B, & M Divisions

The Courses:

1. Start - 1 - 1A - Finish
2. Start - 1 - 1A - Gate (2P or 2S) - 1 - 1A - Finish
3. Start - 0 - 0 A - Finish
4. Start - 0 - 0 A - Gate (2P or 2S) - 0 - 0 A - Finish

All rounding marks to be left to port, except at a Gate.

When a Gate (marks 2A & 2B together) is laid, boats shall sail between the gate marks from the direction of the previous mark and round either mark 2A or 2B.

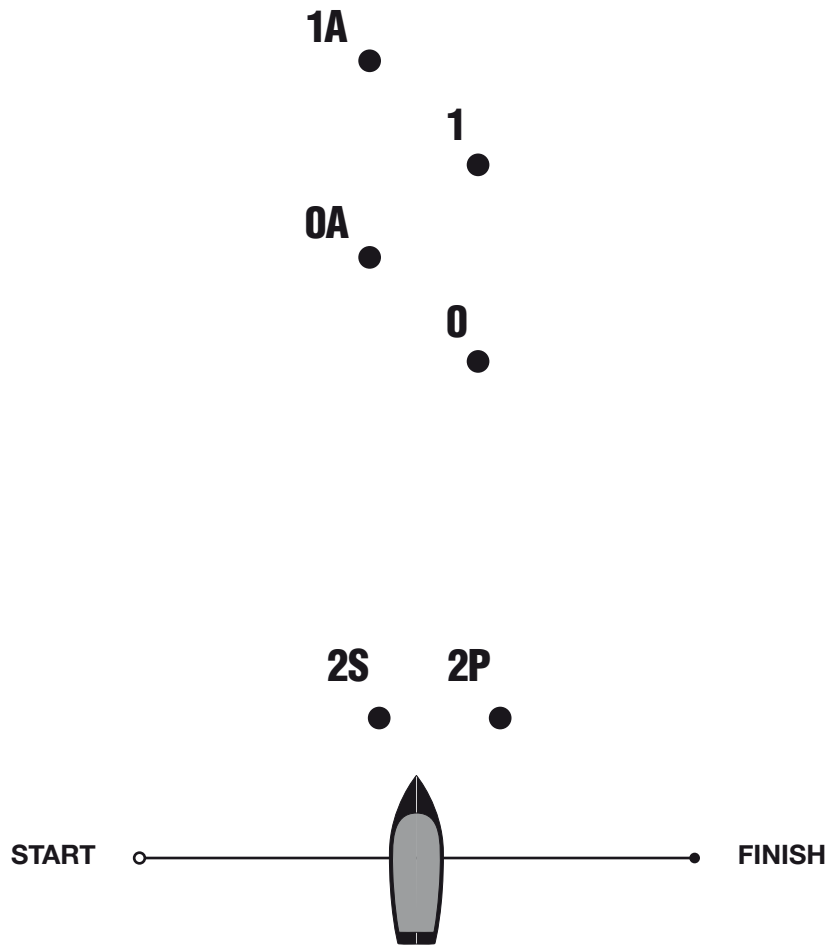


Diagram not to scale.

The Marks:

- | | | | |
|---------|-----------------|---------------------|------------------|
| 1 | Orange Cone | 2P & 2S | Yellow Cylinders |
| 1A..... | Orange Triangle | Start | Orange Cylinder |
| 0..... | Yellow Cylinder | Inner Distance..... | Orange Cylinder |
| 0A..... | Yellow Triangle | Finish | Orange Cylinder |

WINDWARD / LEEWARD COURSES

C, E, Sports Boat & Y88 Divisions

The Courses:

1. Start – 1A - Finish
2. Start – 1A - 2 – 1A – Finish
3. Start - 1 - Finish
4. Start - 1 - 2 - 1 - Finish

All rounding marks to be left to port

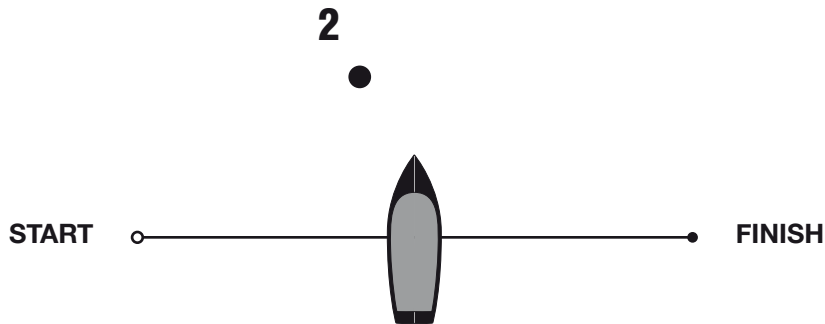
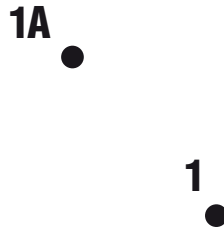


Diagram not to scale.

The Marks:

- 1 Yellow Cone
- 1A..... Yellow Triangle
- 2 Orange Cylinder

- Start Yellow Cylinder
- Inner Distance..... Yellow Cylinder
- Finish Yellow Cylinder

BAY COURSES

A, B, M, C, E, SPORT BOATS & Y88 DIVISIONS

When yachts are passing the Black Rocks, they must pass to seaward of all Black Rocks which are to the north and east of Moturoa Island, up to but not including Flat Island.

When yachts are passing Tapeka Point, they must pass to north and west of all rocks off Tapeka Point.

When yachts are passing Motukiekie Island they must pass to the south of both Ngatokaparangi Island and the unnamed 0.2 m islet approximately 0.18 nm ENE of Ngatokaparangi Island as shown on chart NZ 5125.

For mark positions and descriptions see pages 10-11.

A, B, M, C, E, SB, Y88

- | | |
|--|---|
| <p>5. Start
Windward Mark (if laid)
Kent Passage
Flat Island (P)
Black Rocks (S)
Luxury Real-Estate Buoy (P)
Finish
Approx 8NM</p> | <p>6. Start
Windward Buoy (If Laid)
Finish
Heavy weather course</p> |
| <p>7. Start
Windward Buoy (If Laid)
Luxury Real-Estate Buoy (P)
Southern Channel Marks -both (P)
Cater's Buoy (P)
Southern Channel Marks - both (S)
Brampton Buoy (S)
Finish
Approx. Length – 9NM
Heavy weather course</p> | <p>8. Start
Windward Buoy (If Laid)
Moturoa Island (S)
Through Kent Passage
Motuterakihi Island (S)
Flat Island (P)
Black Rocks (S)
Luxury - Real-Estate Buoy(P)
Finish
Approx. Length - 10NM</p> |
| <p>9. Start
Windward Mark (If Laid)
Ninepin Island (P)
Luxury Real-Estate Buoy (P)
Finish
Approx. Length -11NM</p> | <p>10. Start
Windward Buoy(If Laid)
Motuterakihi Island (P)
Flat Island (P)
Black Rocks (S)
Luxury Real-Estate Buoy (P)
Finish
Approx. Length – 10NM</p> |

11. Start
Windward Mark(If Laid)
Through Kent Passage
Moturoa Island (S)
Motukiekie Island (S)
Luxury Real-Estate Buoy (P)
Finish
Approx. Length -15NM
12. Start
Windward Buoy (If Laid)
Black Rocks (P)
Flat Island (S)
Motuterakihi Island (S)
Black Rocks (S)
Luxury Real-Estate Buoy (P)
Finish
Approx. Length -12M
13. Start
Windward Buoy (If Laid)
Motukiekie Island (S)
Moturua Island (S)
Roberton Island (S)
Luxury Real-Estate Buoy (P)
Finish
Approx. Length - 12NM
14. Start
Windward Buoy (If Laid)
Ninepin Island (P)
Flat Island (P)
Black Rocks (S)
Luxury Real-Estate Buoy (P)
Finish
Approx. Length – 13NM
15. Start
Windward Mark (if laid)
Motuterakihi Island (P)
Flat Islands (P)
Black Rocks (S)
Motukiekie Island (S)
Roberton Island (S)
Luxury Real-Estate (P)
Finish
16. Start
Windward Mark (If Laid)
Nine Pin Island (P)
Flat Island (S)
Moturoa Island (P)
Through Kent Passage
Brampton Buoy (S)
Luxury Real-Estate Buoy (P)
Finish
Approx. Length – 14NM
17. Start
Windward Mark (if laid)
Brampton Buoy (P)
Roberton Island (P)
Motukiekie Island (P)
Motuterakihi Island (P)
Luxury Real-Estate Buoy (P)
Finish
Approx Length 14NM
18. Start
Windward Mark (If Laid)
Brampton Buoy (P)
Black Rocks (P)
Motuterakihi Island (P)
Black Rocks (S)
Luxury Real-Estate Buoy (P)
Finish
Approx. Length – 13NM
19. Start
Windward Mark (If Laid)
Brampton Buoy (P)
Roberton Island (P)
Motukiekie Island (P)
Roberton Island (P)
Luxury Real-Estate Buoy (P)
Finish
20. Start
Windward Mark (If Laid)
Motukiekie Island (P)
Ninein Island (P)
Luxury Real-Estate Buoy (P)
Finish
Approx. Length – 14NM

21. Start
Windward Buoy (If Laid)
Brampton Buoy (P)
Roberton Island (S)
Moturua Island (S)
Motukiekie Island (S)
Moturua Island (S)
Roberton Island (S)
Finish
Approx. Length – 16NM
22. Start
Nine Pin (P)
Flat Islands (P)
Black Rocks (S)
Motukiekie Island (S)
Roberton Island (S)
Luxury Real-Estate Buoy (P)
Finish
23. Start
Windward Buoy (If Laid)
Ninepin Island (S)
Motukiekie Island (S)
Moturua Island (S)
Roberton Island (S)
Luxury Real-Estate Buoy (P)
Finish
Approx. Length – 16NM
24. Start
Motuterakihi Island
Flat Island (P)
Black Rocks (S)
Motukiekie Island (S)
Roberton Island (S)
Luxury Real-Estate Buoy (P)
Finish
25. Start
Windward Mark (If Laid)
Ninepin Island (P)
Motuterakihi Island (P)
Motukiekie Island (S)
Roberton Island (S)
Luxury Real-Estate Buoy (P)
Finish
Approx. Length – 18NM
26. Start
Black Rocks (P)
Flat Island (S)
Ninepin Island (P)
Flat Island (P)
Black Rocks (S)
Luxury Real- Estate Buoy (P)
Finish
27. Start
Windward Mark (If Laid)
Motuterakihi Island (P)
Flat Island (P)
Black Rocks (S)
Motukiekie Island (S)
Moturua Island (S)
Roberton Island (S)
Luxury Real-Estate Buoy (P)
Finish

BAY COURSES

ISLAND RACING DIVISIONS

When yachts are passing the Black Rocks, they must pass to seaward of all Black Rocks, which are to the north and east of Moturoa Island, up to but not including Flat Island.

When yachts are passing Tapeka Point, they must pass to north and west of all rocks off Tapeka Point.

When yachts are passing Motukiekie Island they must pass to the south of both Ngatokaparangi Island and the unnamed 0.2 m islet approximately 0.18 nm ENE of Ngatokaparangi Island as shown on chart NZ 5125.

For mark positions and descriptions see pages 10-11.

1. Start
Bird Rock (P)
Nine Pin (P)
Motuterakihi Island (P)
Flat Island (P)
Black Rocks (S)
Finish
Approx length 34NM
2. Start
Roberton Island (P)
Motukiekie Island (P)
Moturua Island (P)
Roberton Island (P)
Finish
Approx. Length – 15NM
3. Start
Roberton Island (S)
Moturua Island (S)
Motukiekie Island (S)
Roberton Island (S)
Finish
Approx.Length – 15NM
4. Start
Motukiekie Island (P)
Motuterakihi Island (P)
Motukiekie Island (S)
Finish
Approx. Length – 18.5NM
5. Start
Ninepin Island (S)
Motukiekie Island (S)
Roberton Island (S)
Finish
Approx. Length – 19NM
6. Start
Roberton Island (P)
Motukiekie Island (P)
Ninepin Island (P)
Motuterakihi Island (P)
Flat Island (P)
Black Rocks (S)
Finish
Approx. Length – 21.5NM

7. Start
 Roberton Island (P)
 Motukiekie Island (P)
 Ninepin Island (P)
 Motukiekie (S)
 Roberton Island (S)
 Finish
 Approx. Length – 23NM
8. Start
 Roberton Island (P)
 Motukiekie Island (P)
 Motuterakihi Island (P)
 Flat Island (P)
 Black Rocks (S)
 Finish
 Approx. Length – 19NM
9. Start
 Roberton Island (P)
 Motukiekie Island (P)
 Black Rocks (P)
 Motuterakihi Island (S)
 Nine Pin (S)
 Finish
 Approx length 23NM
10. Start
 Motukiekie Island (P)
 Nine Pin (P)
 Motukiekie Island (S)
 Roberton Island (S)
 Motuterakihi Island (P)
 Flat Island (P)
 Black Rocks (S)
 Finish
 Approx length 28NM
11. Start
 Black Rocks (P)
 Motuterakihi Island (S)
 Bird Rock (P)
 Nine Pin (P)
 Finish
 Approx length 32NM
12. Start
 Nine Pin (P)
 Motuterakihi Island (P)
 Flat Island (P)
 Black Rocks (S)
 Motukiekie Island (S)
 Finish
 Approx length 23NM
13. Start
 Nine Pin (S)
 Bird Rock (S)
 Motuterakihi Island (P)
 Flat Island (P)
 Black Rocks (S)
 Finish
 Approx length 34NM
14. Start
 Nine Pin (S)
 Bird Rock (S)
 Motuterakihi Island (P)
 Flat Island (P)
 Black Rocks (S)
 Motukiekie Island (S)
 Roberton Island (S)
 Finish

ADDENDUM A

APPENDIX UF

UMPIRED FLEET RACING RULES

Umpired fleet races shall be sailed under The Racing Rules of Sailing as changed by this appendix. Races shall be umpired. The rule changes in UF1 have been approved by World Sailing under Regulation 28.1.5(b) on the condition that only the provided options are used. This appendix applies only when it is referred to in the Notice of Race and made available for all competitors.

UF1 CHANGES TO THE DEFINITIONS, THE RULES OF PART 1 AND 2, AND RULE 70

UF1.1 Add to the definition Proper Course: 'A boat taking a penalty or manoeuvring to take a penalty is not sailing a proper course.'

UF1.2 Add new rule 7 to Part 1:

7 LAST POINT OF CERTAINTY

The umpires will assume that the state of a boat, or her relationship to another boat, has not changed, until they are certain that it has changed.'

UF1.3 Rule 14 is changed to:

14 AVOIDING CONTACT

14.1 If reasonably possible a boat shall

- (a) avoid contact with another boat,
- (b) not cause contact between boats, and
- (c) not cause contact between a boat and an object that should be avoided.

However, a right-of-way boat, or one sailing within the room or mark-room to which she is entitled, need not act to avoid contact until it is clear that the other boat is not keeping clear or giving room or mark-room.

14.2 When there is contact that causes damage, or the umpires decide a boat has broken rule 14 and damage resulted, they may, without a hearing, impose a scoring penalty on any boat involved in the incident. The minimum penalty to be applied in such a case is 10 (Ten) points.

UF1.4 When rule 20 applies, the following arm signals are required in addition to the hails:

- (a) for room to tack, repeatedly and clearly pointing to windward; and
- (b) for 'You tack', repeatedly and clearly pointing at the other boat and waving the arm to windward.

UF1.5 Rule 70 is deleted.

UF1.6 Test rules

UF2 CHANGES TO OTHER RULES

UF2.1 28 SAILING THE COURSE

Rule 28.2 is changed to:

28.2 A boat may correct any errors in sailing the course, provided she has not rounded the next mark or crossed the finishing line to finish.

UF3 ON WATER PROTESTS AND PENALTIES

UF3.1 In this appendix, 'a voluntary penalty' will mean the following:

A One-Turn Penalty taken in accordance with rule 44.2.

If a boat is penalised by an umpire, she shall take a Two-Turn penalty in accordance with rule 44.2.

UF3.2 The first sentence of rule 44.1 is changed to: 'A boat may take a penalty when, in an incident while racing, she may have broken one or more of the rules of Part 2 (except rule 14 when she has caused damage or injury), rule 31 or rule 42. However, when she may have broken a rule of Part 2 and rule 31 in the same incident, she need not take the penalty for breaking rule 31'.

UF3.3 On the Water Protests by Boats and Penalties

(a) While racing, a boat may protest another boat under a rule of Part 2 (except rule 14) or under rule 31 or rule 42; however, a boat may only protest under a rule of Part 2 for an incident in which she was involved. To do so she shall hail 'Protest' and conspicuously display a red flag at the first reasonable opportunity for each. She shall remove the flag before, or at the first reasonable opportunity after a boat involved in the incident has taken a penalty voluntarily or after an umpire's decision.

(b) A boat that protests as provided in rule UF3.3(a) is not entitled to a hearing except as provided in UF3.3(c) or unless an umpire signals in accordance with UF3.5(d). Instead, a boat involved in the incident may acknowledge breaking a rule by voluntarily taking a penalty. An umpire may penalize any boat that broke a rule and was not exonerated unless the boat took a penalty voluntarily.

(c) A boat that protests as provided in rule UF3.3(a) but received no acknowledgment or response from an umpire may protest in accordance with RRS 61.

UF3.4 Penalties and Protests Initiated by an Umpire

(a) When a boat

- (1) breaks rule 31 and does not take a penalty,
- (2) breaks rule 42,
- (3) gains an advantage despite taking a penalty,
- (4) commits a breach of sportsmanship, or
- (5) fails to comply with rule UF3.6 or to take a penalty when required to do so by an umpire,
- (6) breaks a boat handling rule,
- (7) sails inside a prohibited sailing area.
- (8) fails to comply with rule UF2.1 (rule 28.2) an umpire shall disqualify her under rule UF3.5(c), an umpire may penalize her without a protest by another boat. The umpire may impose a penalty or more, each signalled in accordance with rule UF3.5(b) or disqualify her under rule UF3.5(c) or report the incident to the protest committee

for further action. If a boat is penalized under rule UF3.4(a)(5) for not taking a penalty or taking a penalty incorrectly, the original penalty is cancelled,

(b) An umpire who decides, based on his own observation or a report received from any source, that a boat may have broken a rule, other than rule UF3.6 or rule 28 or a rule listed in rule UF3.3(a), may inform the protest committee for its action under rule 60.3. However, he will not inform the protest committee of an alleged breach of rule 14 unless there is damage or injury.

UF3.5 Umpire Signals

An umpire will signal a decision as follows:

(a) A green and white flag with one long sound means 'No penalty.'

(b) A red flag with one long sound means 'a penalty is imposed or remains outstanding.' The umpire will hail or signal to identify each such boat.

(c) A black flag with one long sound means 'A boat is disqualified.' The umpire will hail or signal to identify the boat disqualified.

(d) A yellow flag with one long sound means 'The umpires do not have the facts required to make a decision.'

UF3.6 Imposed Penalties

(a) A boat penalized under rule UF3.5(b) shall take a penalty.

(b) A boat disqualified under rule UF3.5(c) shall promptly leave the course area.

UF4 RACE COMMITTEE ACTIONS

UF4.1 After boats have finished, the race committee will inform competitors about the results on the official noticeboard.

UF5 PROTESTS; REQUESTS FOR REDRESS OR REOPENING; APPEALS; OTHER PROCEEDINGS

UF5.1 No proceedings of any kind may be taken in relation to any action or non-action by an umpire.

UF5.2 A boat is only entitled to a hearing when the umpires have signalled in accordance with UF3.5(d) or under UF5.3.

UF5.3 A boat intending to

(a) protest another boat under a rule other than rule UF3.6 or rule 28, or a rule listed in rule UF3.3(a),

(b) protest another boat under rule 14 if there was contact that caused damage or injury, or

(c) request redress shall inform the race committee in the following way: hail the race committee within 2 (two) minutes of finishing.

UF5.4 The time limit defined in rule UF5.3 also applies to protests under rule UF5.9, UF5.10 and UF5.11 when such protests are permitted. The protest

committee shall extend the time limit if there is good reason to do so.

UF5.5 The race committee will promptly inform the protest committee about any protests or requests for redress made under rule UF5.3.

UF5.6 The third sentence of rule 61.1(a) and all of rule 61.1(a)(2) are deleted.

UF5.7 The first three sentences of rule 64.2 are changed to: 'When the protest committee decides that a boat that is a party to a protest hearing has broken a rule, it may impose penalties other than disqualification, and may make any other scoring arrangement it decides is equitable. If a boat has broken a rule when not racing, the protest committee shall decide whether to apply any penalty to the race sailed nearest in time to that of the incident or make some other arrangement.'

UF5.8 Hearings

Except for a hearing under rule 69.2

(a) Protests and requests for redress need not be in writing.

(b) The protest committee may inform the protestee and schedule the hearing in any way it considers appropriate and may communicate this orally.

(c) The protest committee may take evidence and conduct the hearing in any way it considers appropriate and may communicate its decision orally.

(d) If the protest committee decides that a breach of a rule has had no effect on the outcome of the race, it may impose a scoring penalty of points or fraction of points or make any other arrangement it decides is fair, which may be to impose no penalty.

(e) If the protest committee penalizes a boat in accordance with rule UF5.7 or if a standard penalty is applied, all other boats will be informed about the change of the penalized boat's score.

UF5.9 The race committee may protest a boat.

UF5.10 The protest committee may protest a boat under rule 60.3. However, it will not protest a boat for breaking rule UF3.6 or rule 28, a rule listed in rule UF3.3(a), or rule 14 unless there is damage or injury.

UF5.11 The technical committee will only protest a boat under rule 60.4 when it decides that a boat or personal equipment does not comply with the class rules, rule 50, or the rules in the equipment regulations of the event, if such exist. In such a case, the technical committee shall protest.

UF5.12 Rule 66.2 is changed to 'A party to the hearing under this appendix may not request a reopening.'

RECOMMENDED ACTION FOR ON WATER EMERGENCIES.

If you have an accident or injury while on the race course or coming and going from the race course and outside assistance is required the following actions should be taken.

1. If there is imminent threat to life or property and immediate assistance is required - use the Mayday procedures on VHF Channel 16. If using a mobile phone dial 111 and ask for the police.
2. Otherwise contact the Coastguard
calling/working channelVHF Channel 04
marine assistance * 500
Bay of Islands office09 407 4071

The Coastguard will be on duty throughout the Regatta.

When contacting the Coastguard or race officers please advise the nature of the problem, giving as much information as possible, including;

- Name of Vessel(s) involved
- Current location
- Nature of incident
- Details of any person(s) injured
- Details of damage to boat(s)

In the event of a serious injury needing evacuation you will be directed by the Coastguard as to the nearest evacuation point.

If you are unable to contact Coastguard please inform the race officer for your course.

3. If you have to retire from a race or leave the race area advise the race officer on the VHF channel for your course. Please avoid calling the race officer while he/she is starting a race or setting a course. If needed please ring or radio the Race Office.
4. Incident report forms are available at the Race Hut. We encourage you to fill out an incident report as that will help us make the regatta safer.

NorthlandInc

Growing Northland's Economy

Kia tupu ai te ōhanga o Te Tai Tokerau

designprint 09 407 8824

K E R I K E R I www.keriprint.co.nz

Get out of Town



#Northland
Style